


ThompsonCreek
METALS COMPANY INC.



ENDAKO MINE

April 24, 2015

Vanderhoof, BC

Teachers

WHO IS THIS GUY?



Kosta Sainis, P.Eng.

Environmental Superintendent
Endako Mine

Phone: 250.699.6211 Ext 340

Cell: 250.699.2536

E-mail: ksainis@tcrk.com

BSc. Fish Biology

BASc. Environmental Engineering

MBA (2016 Expected)



AGENDA

- Overview
- Process
- Environment

✓ TEST

OVERVIEW: ENDAKO MINE

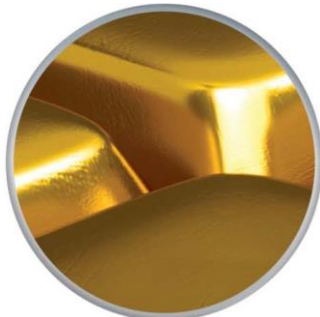
Thompson Creek Metals Company Inc.

Growing, diversified North American mining company.

- Thompson Creek Mine, Idaho
- Endako Mines, BC
- Langeloth Metallurgical Facility, Pennsylvania

Diversified into Copper & Gold

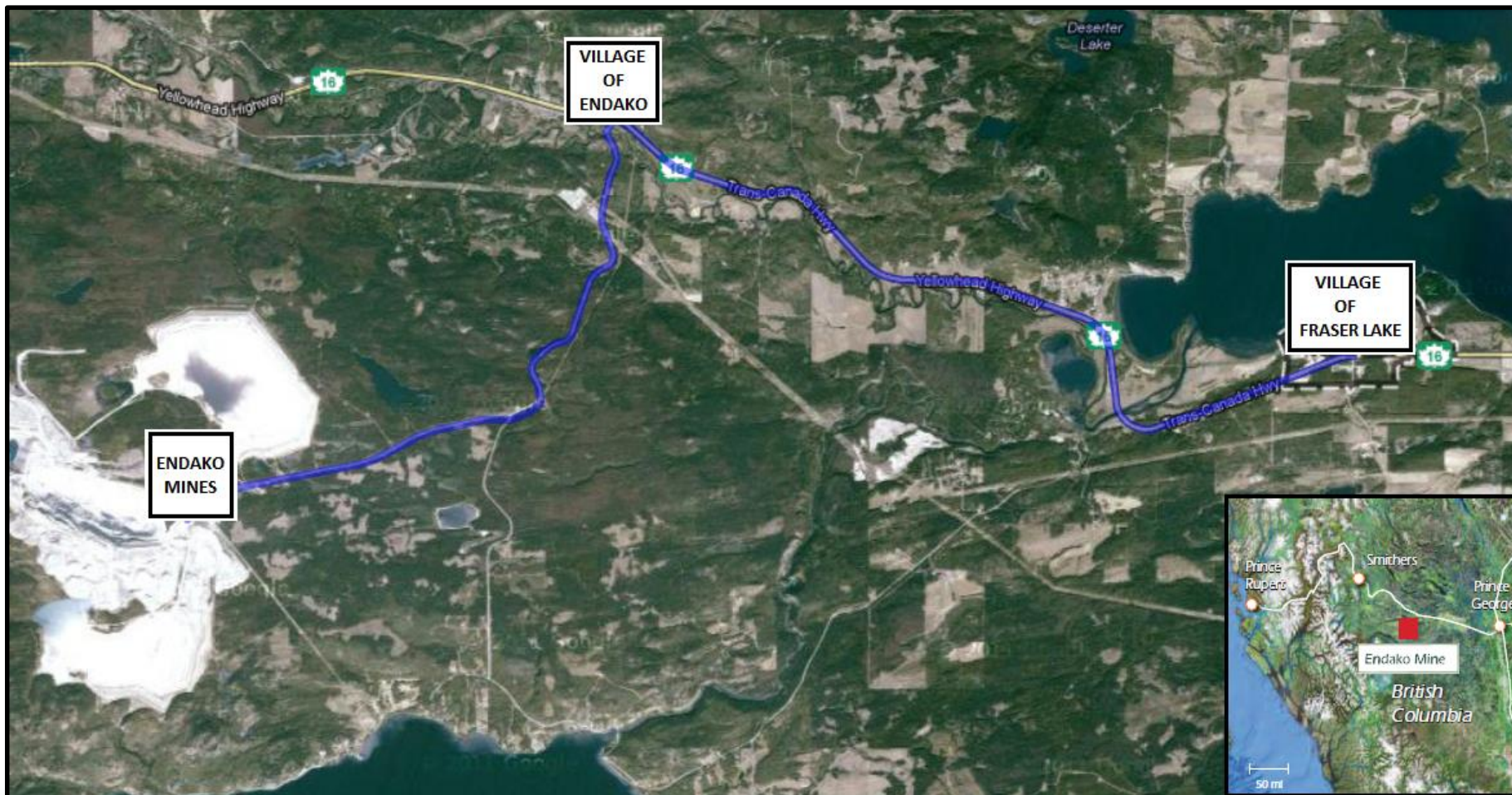
- Mt. Milligan, BC



NYSE: TC \$1.29
TSX: TCM \$1.57

OVERVIEW: ENDAKO MINE

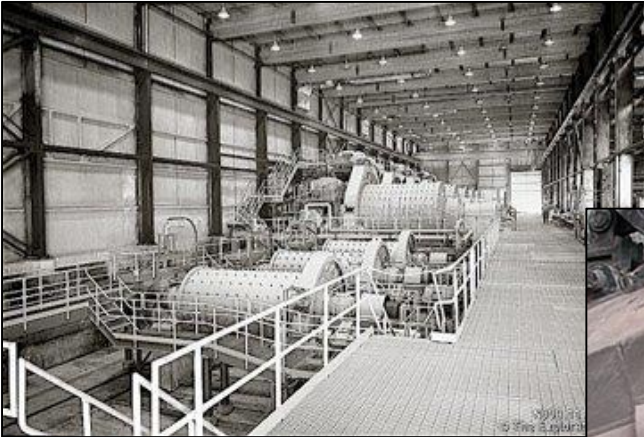
ENDAKO MINES





OVERVIEW: ENDAKO MINE

- **Operation since 1965 (40+ years). During this time:**
 - Economically viable operation (exception mid 1982- mid 1986) & currently 2015
 - Helped support healthy communities in both Fraser Lake and surrounding areas.
 - Operated in an environmentally responsible manner.



OVERVIEW: ENDAKO MINE

- **Employees: 375 operating, 40 suspension**
- **Good example of sustainable Mining Industry.**
- **Has provided benefit to communities for years and hopes to continue benefits for years to come.**

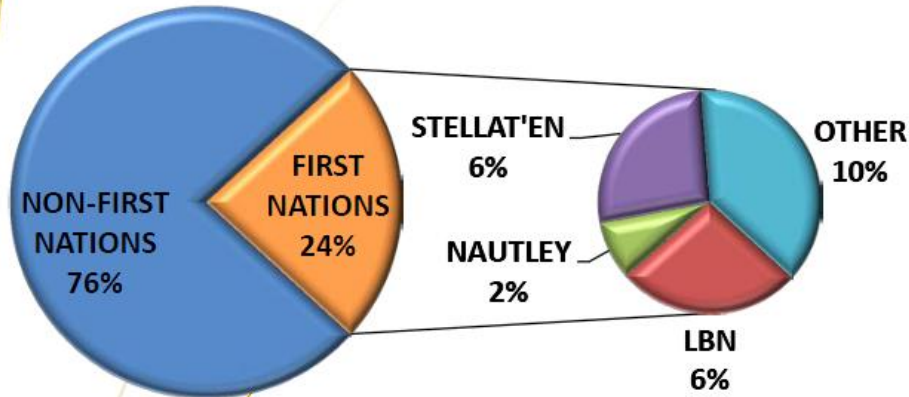


12-Year Mine Life

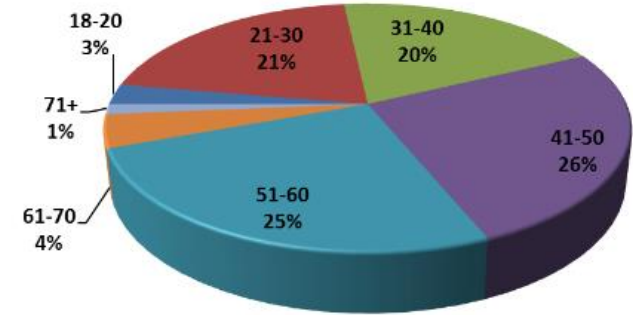
(Based on proven and probable reserves)

Operating Workforce Demographics

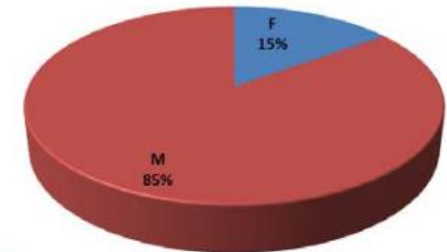
FIRST NATIONS



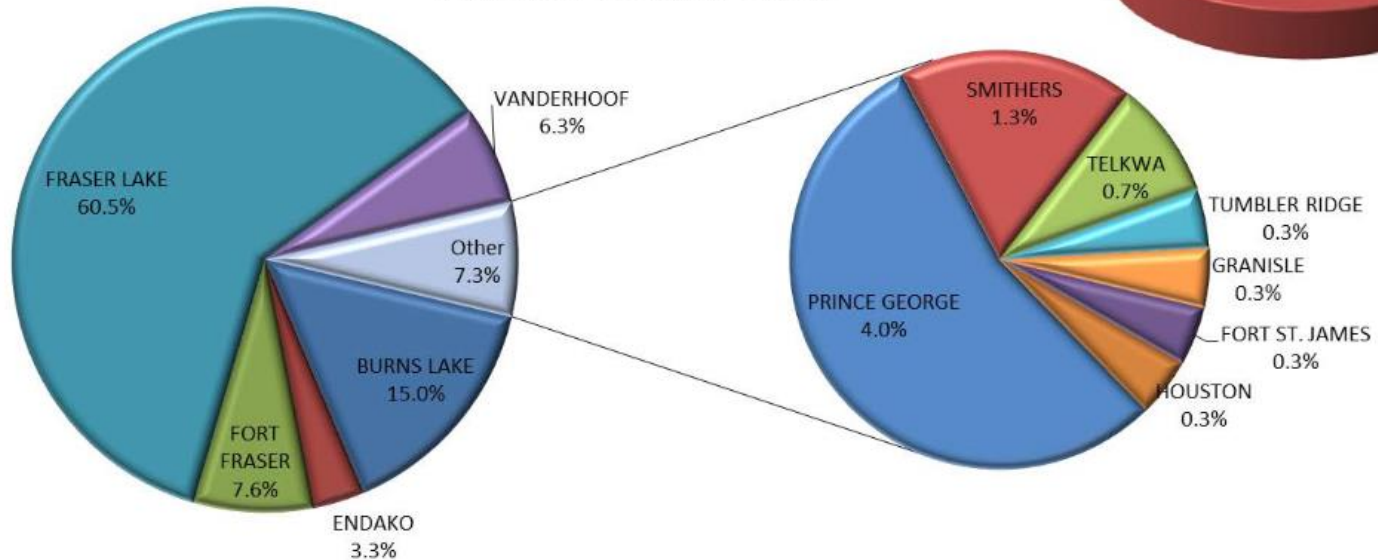
AGE DISTRIBUTION



GENDER



EMPLOYEES BY REGION



OVERVIEW: ENDAKO MINE



First Uses of
Mo
molybdenum²



Construction Engineering Steels	34%
Stainless Steels	25%
Alloy Tool & High Speed Steels	11%
Chemicals	10%
Cast Iron & Steels	8%
Super Alloys	6%
Molybdenum Metal	6%

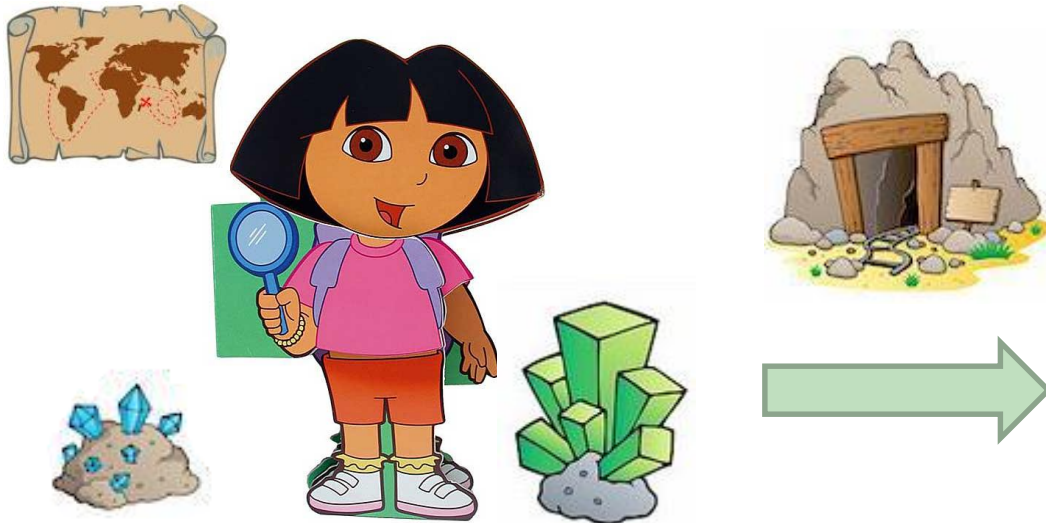


- Strengthens steel, improves weldability, reduces brittleness, helps steel perform well in high or low temperatures.
- Key catalyst in petroleum refining for sulfur removal.
- Powerful anti-corrosive alloy for stainless and alloy steels.



41	Molybdenum	42
b		Mo
91		95.94
1.6		1.8

1) EXPLORE



2) MINING



3) MILLING & PROCESSING

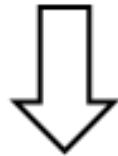


4) RECLAMATION & CLOSURE

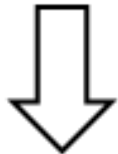


OVERVIEW: ENDAKO MINE

MINING
(ORE EXTRACTION AND WASTE SEGREGATION)

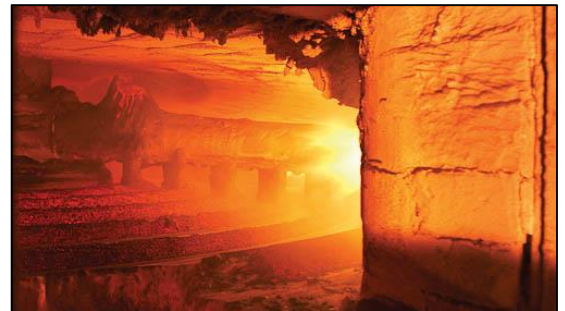


MILLING
(LIBERATION AND CONCENTRATING OF MoS_2)



ROASTING
(DRIVING THE CONVERSION OF MoS_2 TO END PRODUCT: MoO_3)

Roaster not currently in operation. Scheduled maintenance deferred.



OVERVIEW: ENDAKO MINE

MINING



Drilling & Blasting



Ore & Waste Segregation



Crushing & Conveying







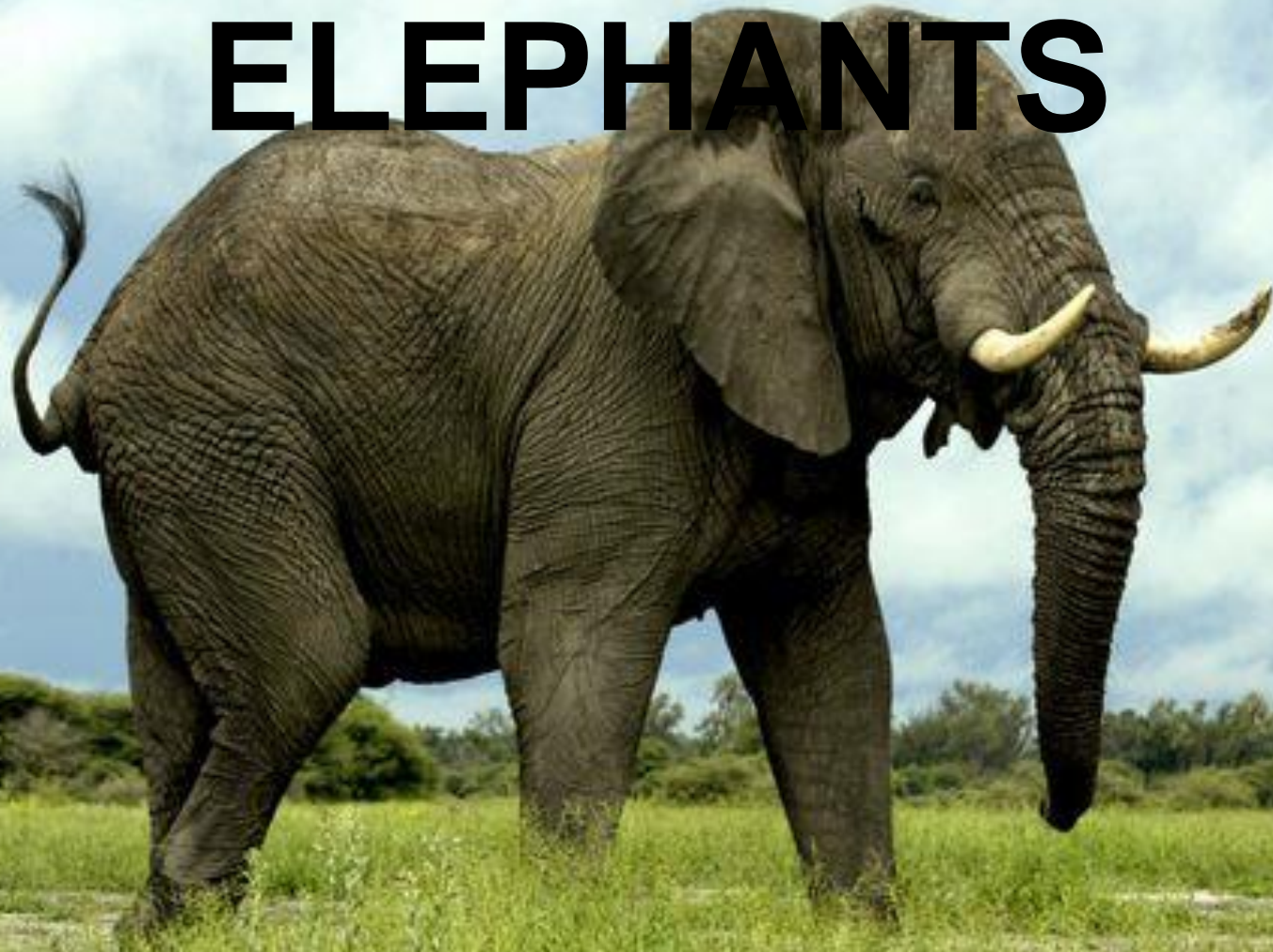
BUCYRUS

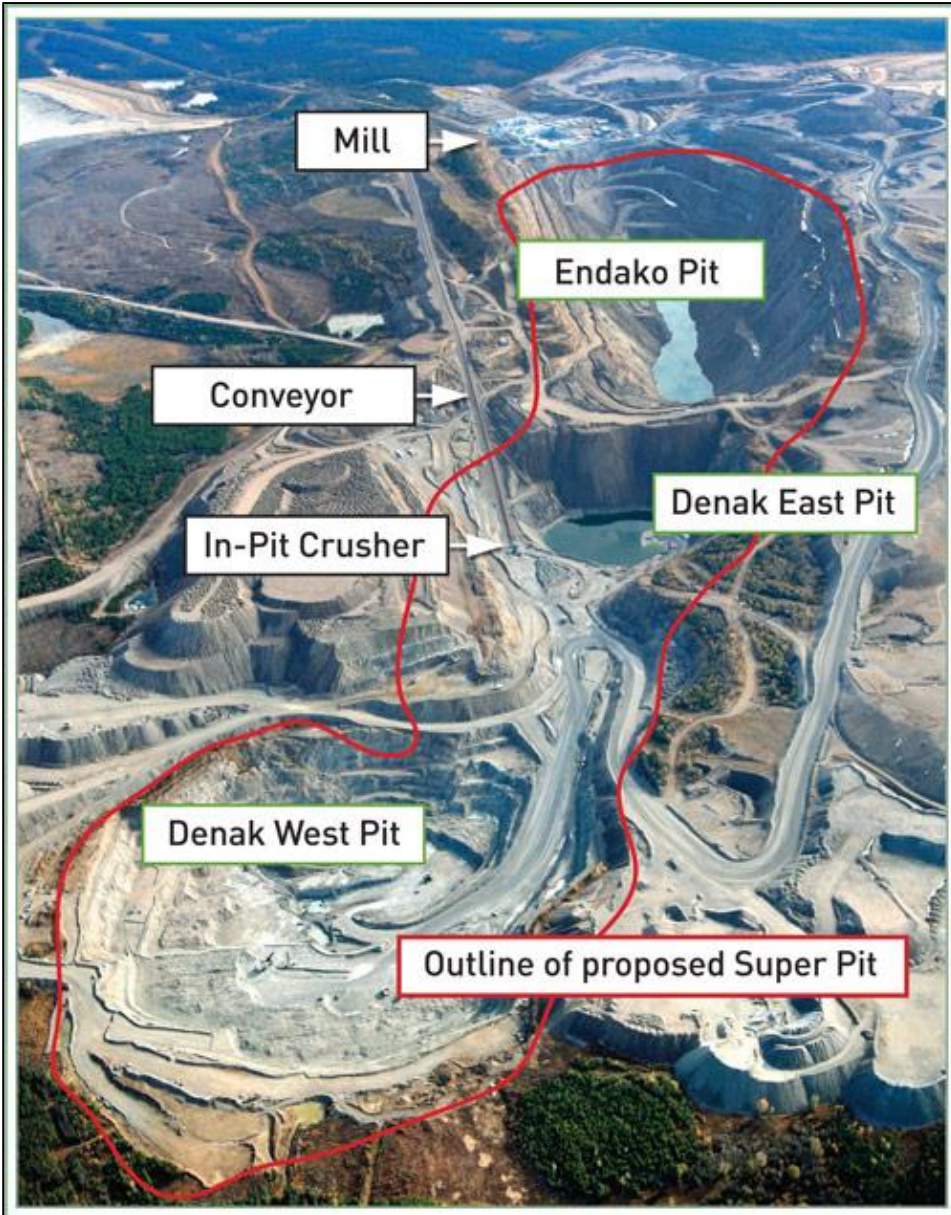
MT4400AC

8 5

~50

ELEPHANTS



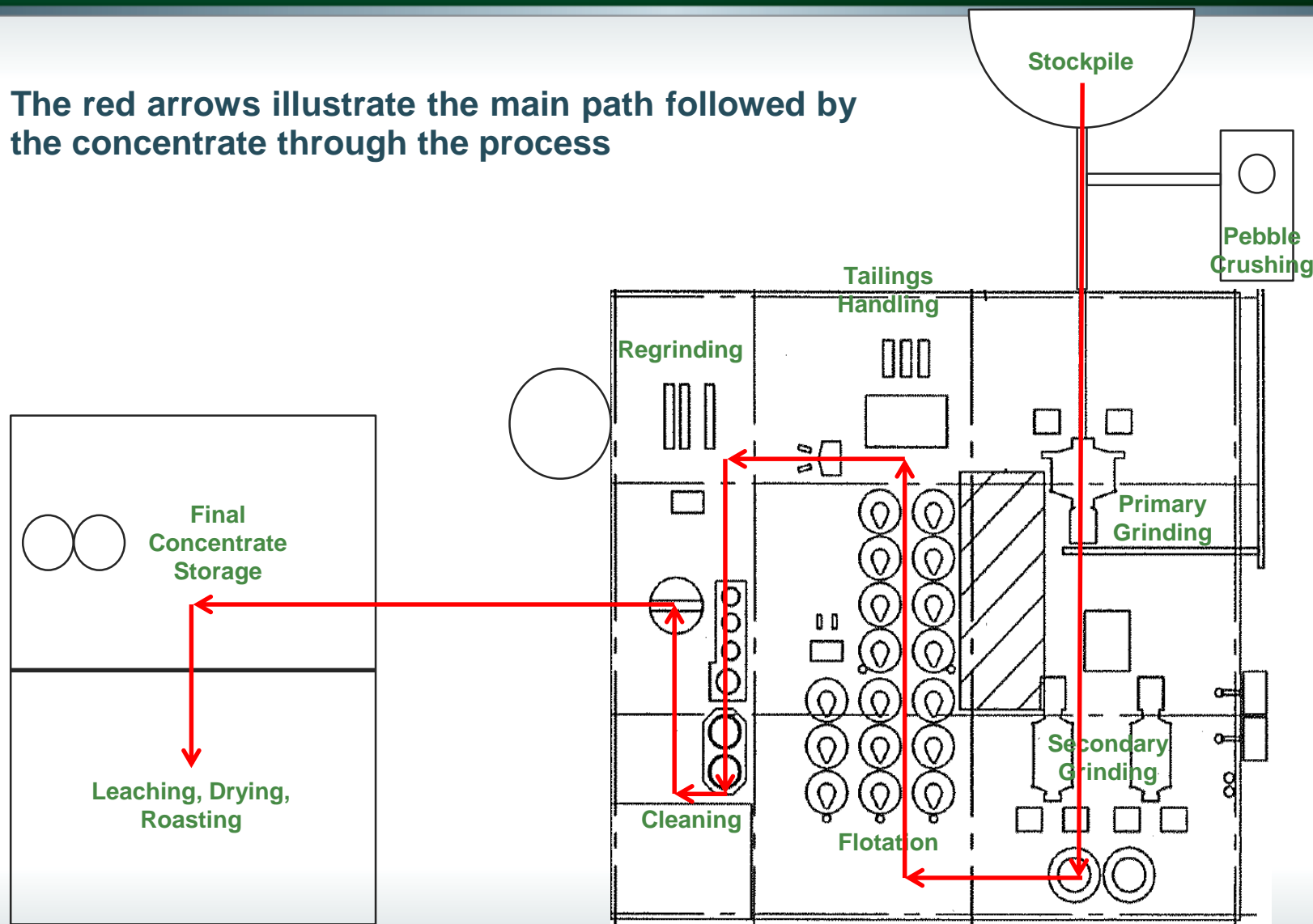






OVERVIEW: ENDAKO MINE

The red arrows illustrate the main path followed by the concentrate through the process



OVERVIEW: ENDAKO MINE

**Overland
Conveyor
And Ore
Stockpile**



**SAG Feed
Conveyor
Belt**



36' SAG Mill in Operation



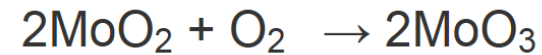
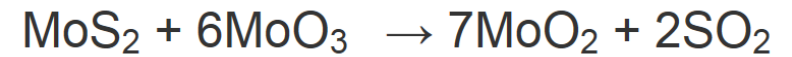
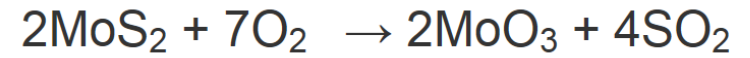
Rougher/Scavenger Circuit



Regrinding Circuit

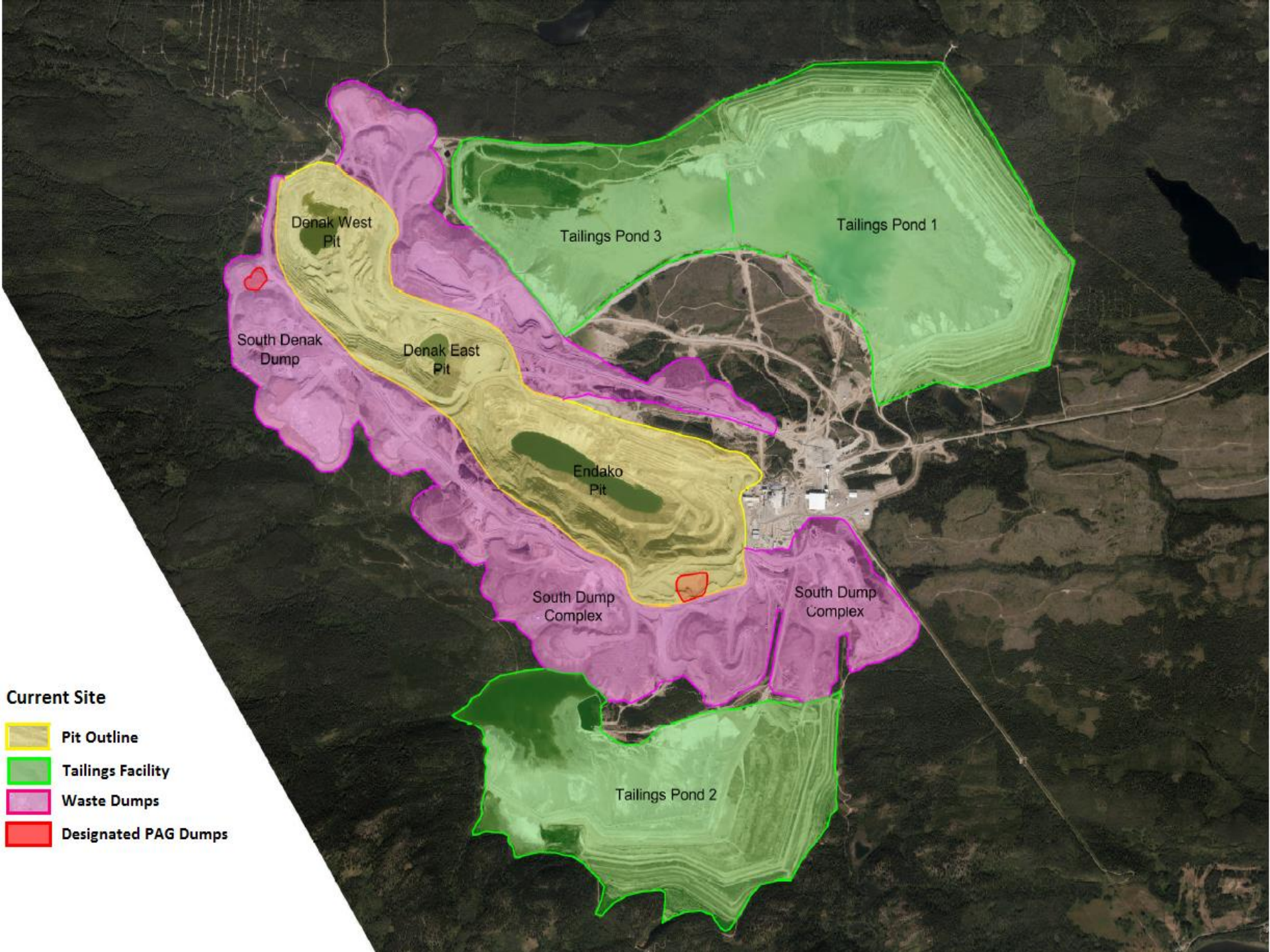


ROASTING



Temperatures
500 – 650 °C





Denak West Pit

Tailings Pond 3

Tailings Pond 1

South Denak Dump

Denak East Pit

Endako Pit

South Dump Complex

South Dump Complex

Tailings Pond 2

Current Site

-  Pit Outline
-  Tailings Facility
-  Waste Dumps
-  Designated PAG Dumps

ENVIRONMENTAL DEPARTMENT

- Responsibilities include:
 - Ensuring site operates in environmentally responsible manner.
 - Water sampling and air emission monitoring: EC and MOE.
 - Site reclamation.



Surface Water Sampling Locations



EFFECTS MONITORING ONGOING



RECLAMATION











Overburden salvaged from area stripped from new coarse ore pile was hauled to Tailings Pond 2.



Spread over a 30 ha area at depth of 2 feet (0.6 m).







WILDLIFE





07-16-2013 07:07:39



03/30/2013 12:58



07/13/2013 07:55



07/11/2013 15:22



06-13-2013 13:06:39



05-08-2013 20:01:15



05-09-2013 05:34:12



03/04/2013 08:15

QUESTIONS/DISCUSSION



Thank you!

